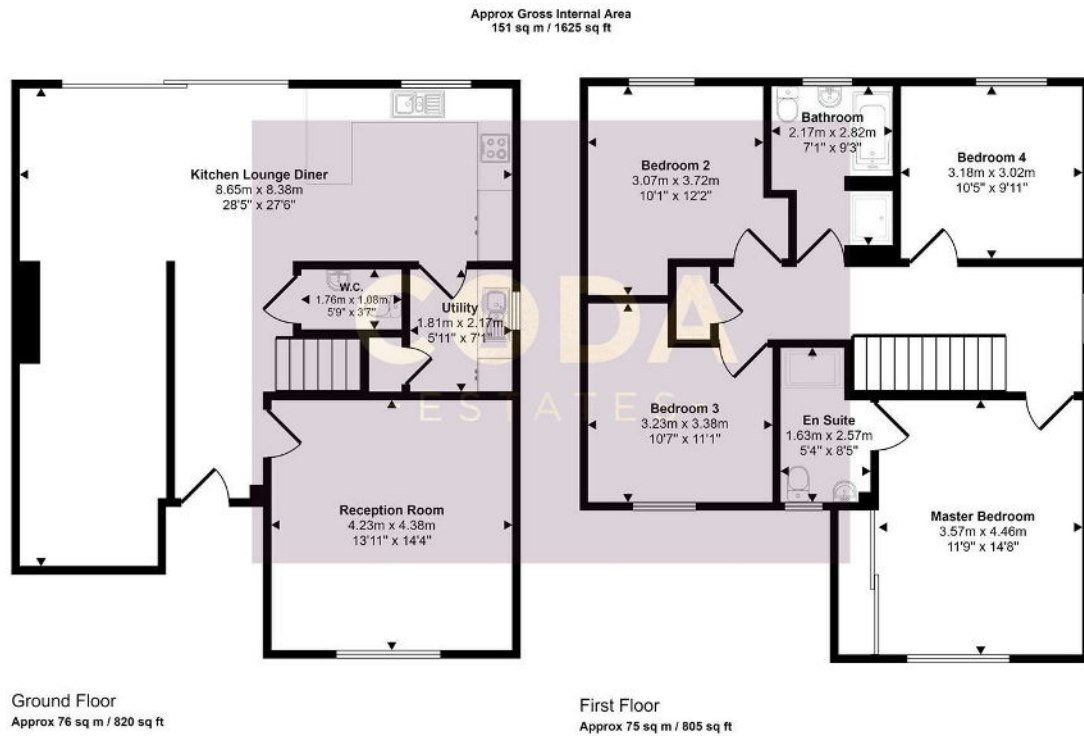




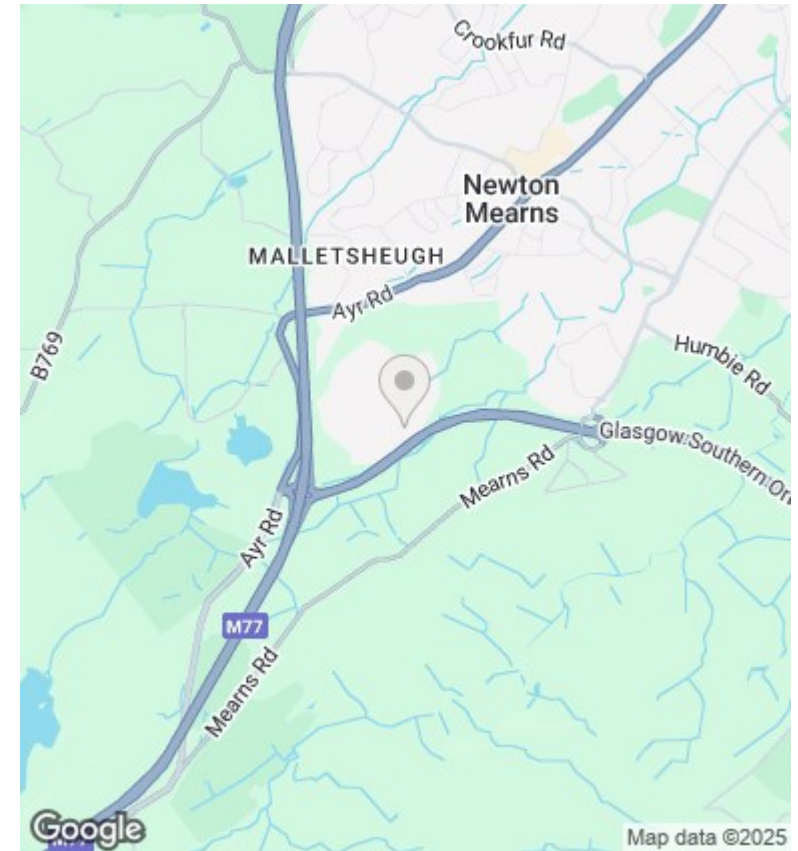
29 Scalpay Drive, Newton Mearns, Glasgow, G77 5WX

Offers Over £480,000

- Impressive Detached Family Home
- Numerous Upgraded Features
- 2 Bathrooms, W.C. and Utility
- EER - B
- Highly Coveted Address
- Open Plan Kitchen/Dining/Family Room w/Sliding Doors to Gardens
- Proximity to Excellent Schooling and Transport Links
- Immaculate Finish Throughout
- 4 Double Bedrooms - Master En-Suite
- Close to all Local Amenities



This floorplan is only for illustrative purposes and is not to scale. Measurements of rooms, doors, windows, and any items are approximate and no responsibility is taken for any error, omission or mis-statement. Icons of items such as bathroom suites are representations only and may not look like the real items. Made with Made Snappy 360.



Directions

Viewings

Viewings by arrangement only. Call 01417751050 to make an appointment.

Council Tax Band

G

EPC Rating:

B

Energy Efficiency Rating		Current	Potential
<i>Very energy efficient - lower running costs</i>			
(92 plus)	A		
(81-91)	B	83	84
(69-80)	C		
(55-68)	D		
(39-54)	E		
(21-38)	F		
(1-20)	G		
<i>Not energy efficient - higher running costs</i>			
Scotland		EU Directive 2002/91/EC	